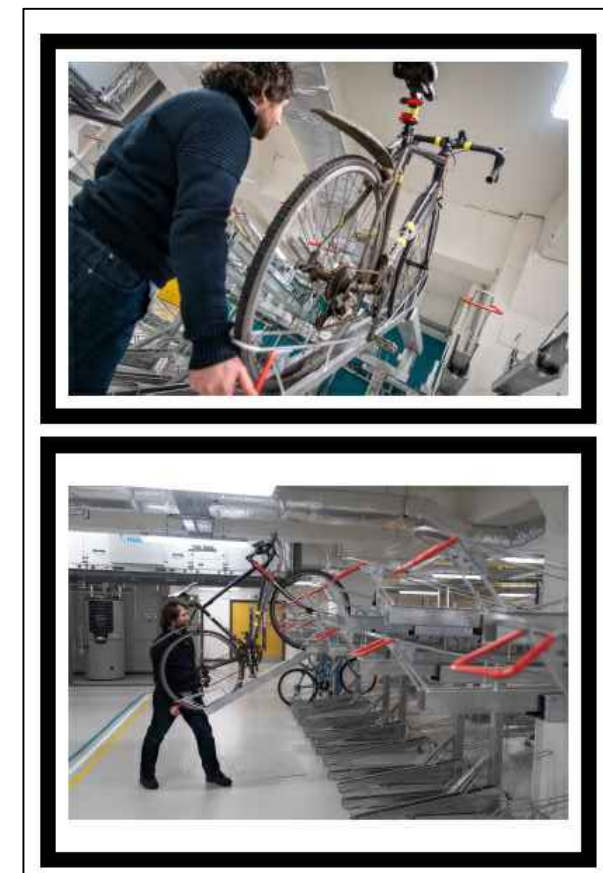
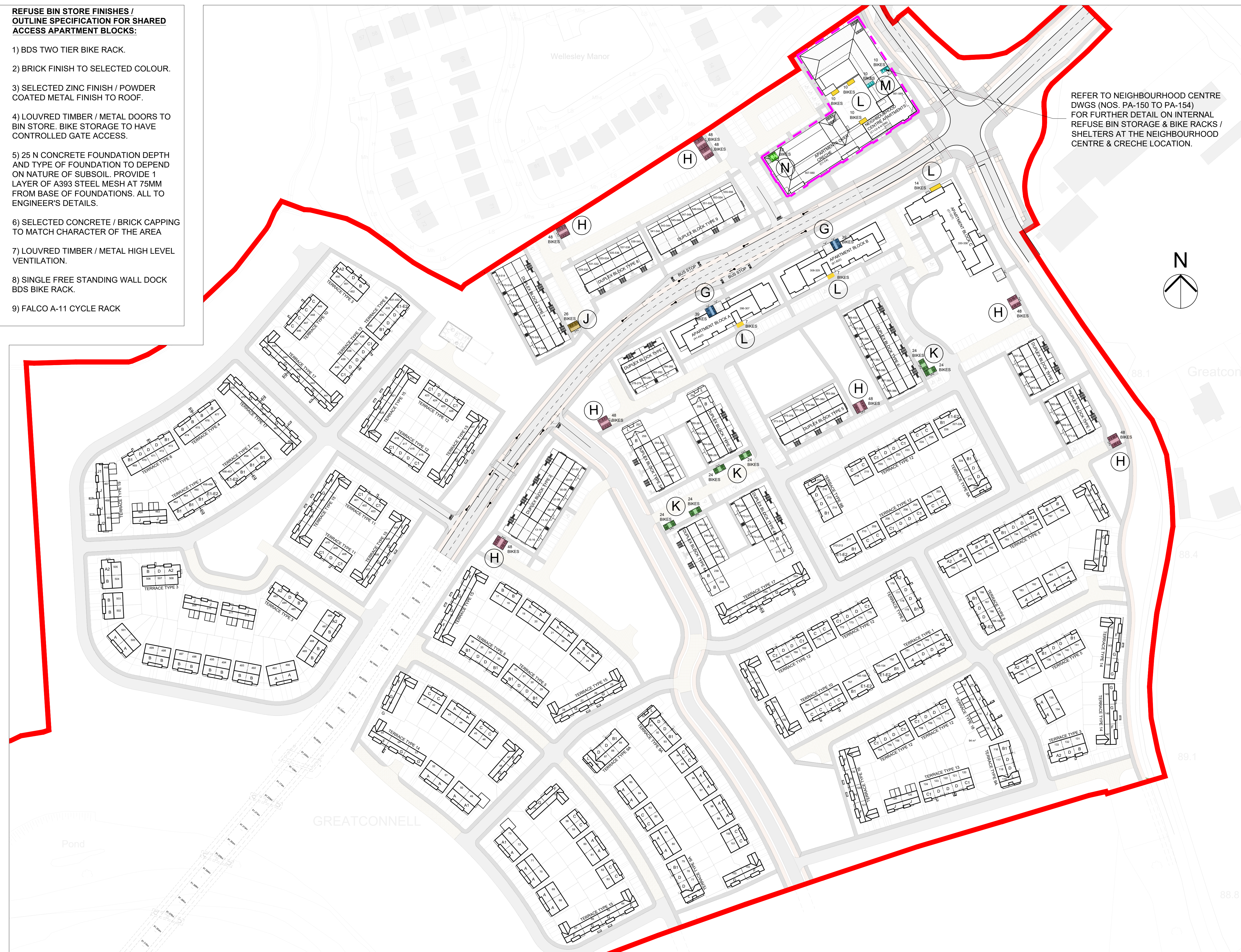
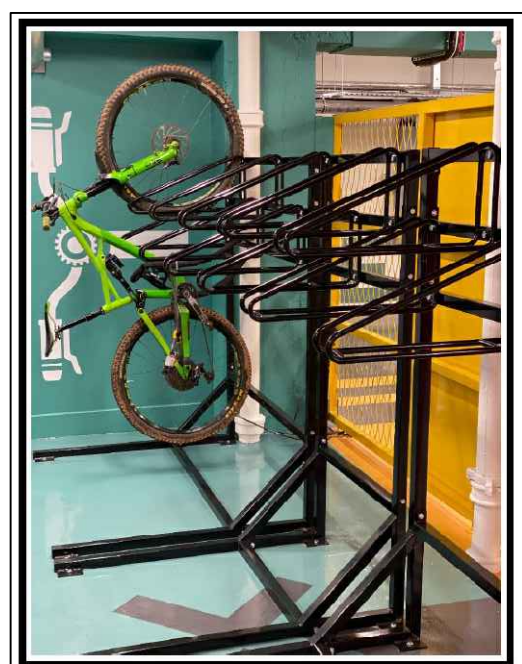


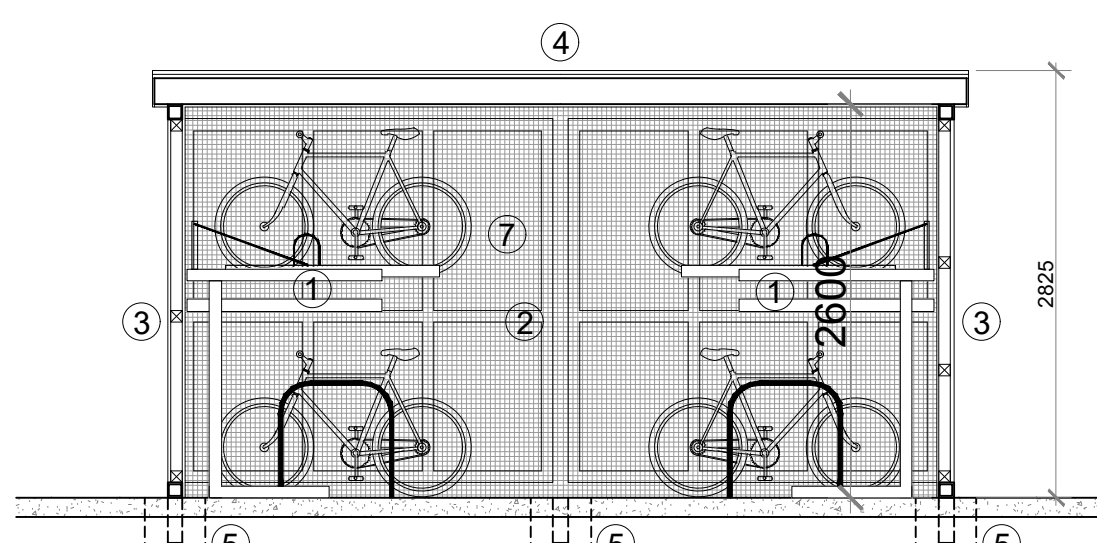
- REFUSE BIN STORE FINISHES / OUTLINE SPECIFICATION FOR SHARED ACCESS APARTMENT BLOCKS:**
- 1) BDS TWO TIER BIKE RACK.
  - 2) BRICK FINISH TO SELECTED COLOUR.
  - 3) SELECTED ZINC FINISH / POWDER COATED METAL FINISH TO ROOF.
  - 4) LOUVRED TIMBER / METAL DOORS TO BIN STORE. BIKE STORAGE TO HAVE CONTROLLED GATE ACCESS.
  - 5) 25 N CONCRETE FOUNDATION DEPTH AND TYPE OF FOUNDATION TO DEPEND ON NATURE OF SUBSOIL. PROVIDE 1 LAYER OF A393 STEEL MESH AT 75MM FROM BASE OF FOUNDATIONS. ALL TO ENGINEER'S DETAILS.
  - 6) SELECTED CONCRETE / BRICK CAPPING TO MATCH CHARACTER OF THE AREA
  - 7) LOUVRED TIMBER / METAL HIGH LEVEL VENTILATION.
  - 8) SINGLE FREE STANDING WALL DOCK BDS BIKE RACK.
  - 9) FALCO A-11 CYCLE RACK



SAMPLE IMAGE OF TWO TIER BIKE RACK BY DOCK SOLUTIONS (BDS)  
①



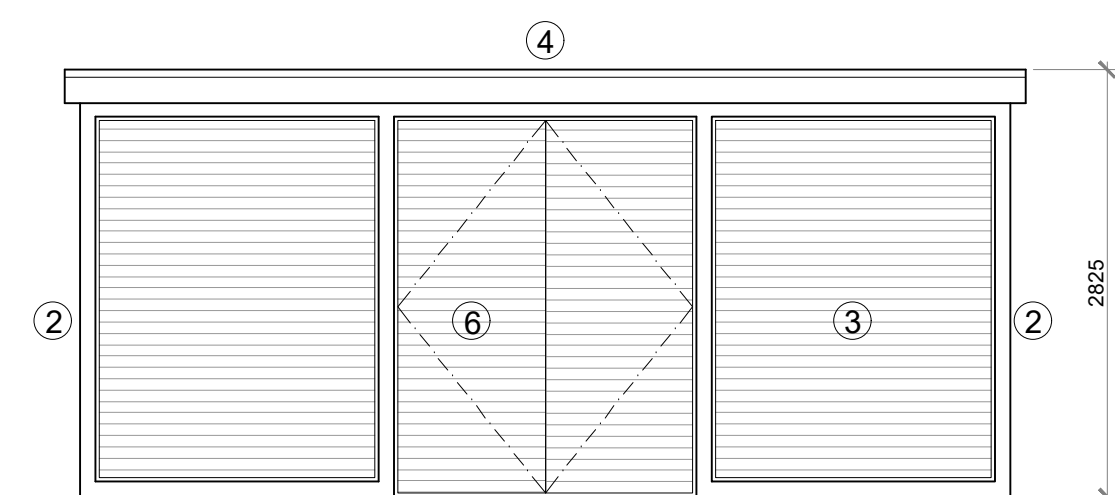
SAMPLE IMAGE OF FREE STANDING WALL DOCK BY BIKE DOCK SOLUTIONS (BDS)  
⑧



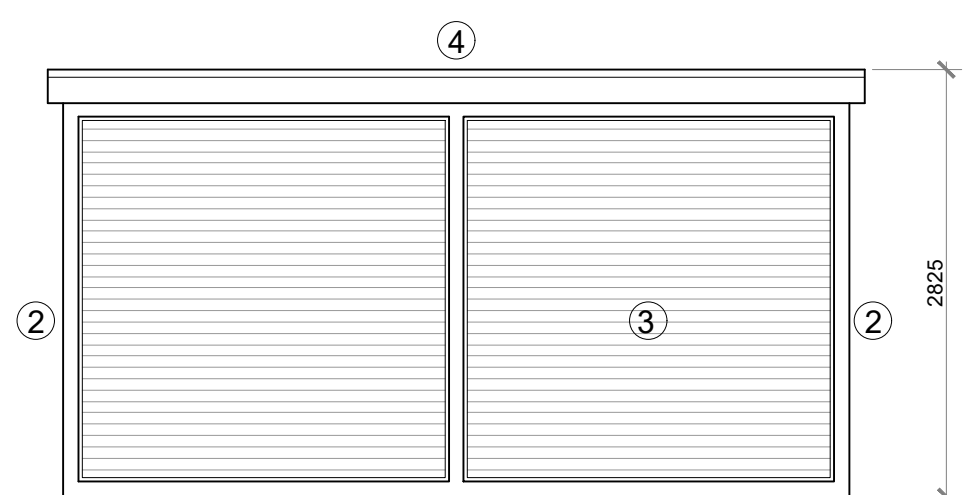
TYPICAL SECTION A-A @ 1:50

**BIKE SHELTER FINISHES / OUTLINE SPECIFICATION:**

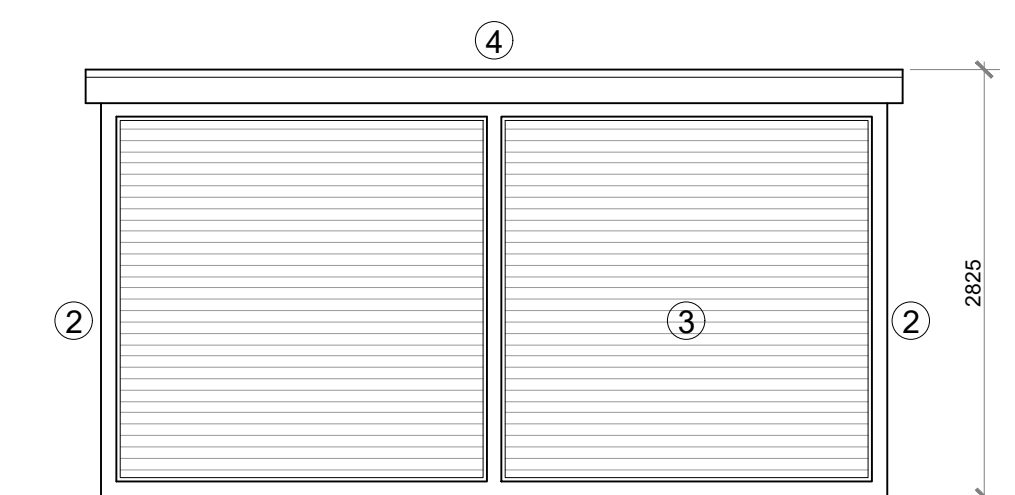
- 1) BDS TWO TIER BIKE RACK.
- 2) GALVANISED / POWDER COATED STEEL FRAME TO ENGINEER'S DETAILS.
- 3) SELECT TIMBER / COMPOSITE CLADDING (INSET TO STEEL FRAME).
- 4) SELECTED FLAT ROOF FINISH WITH POWDER COATED METAL FASCIA.
- 5) 25 N CONCRETE FOUNDATION DEPTH AND TYPE OF FOUNDATION TO DEPEND ON NATURE OF SUBSOIL. ALL TO ENGINEER'S DETAILS.
- 6) SELECT TIMBER / COMPOSITE CLADDING / METAL FINISH TO DOOR. BIKE STORAGE TO HAVE CONTROLLED GATE ACCESS.
- 7) GALVANISED STEEL MESH TO INSIDE OF BICYCLE ENCLOSURE.
- 8) SINGLE FREE STANDING WALL DOCK BDS BIKE RACK.
- 9) FALCO A-11 CYCLE RACK



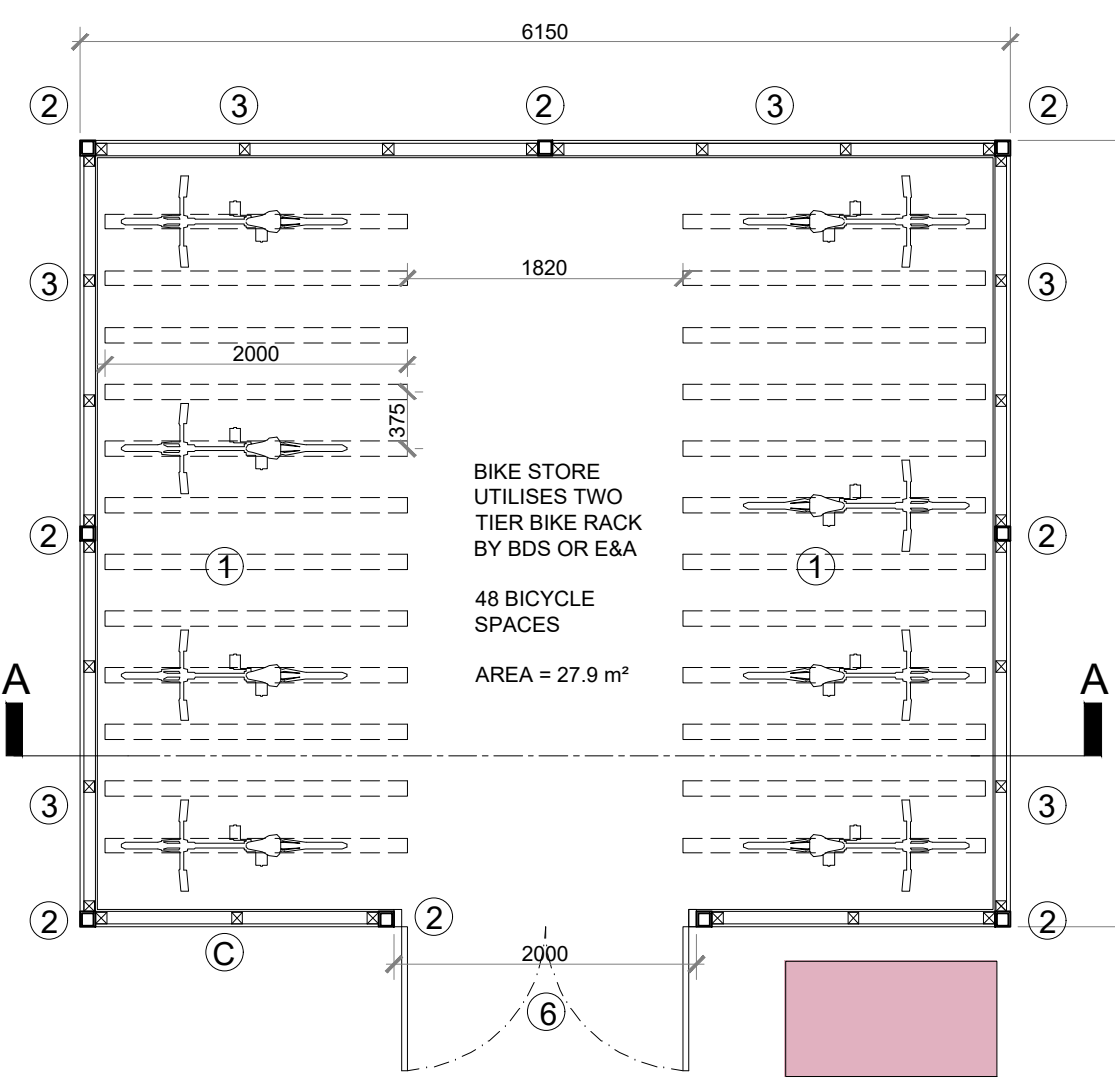
TYPICAL FRONT ELEVATION @ 1:50



TYPICAL SIDE ELEVATION @ 1:50

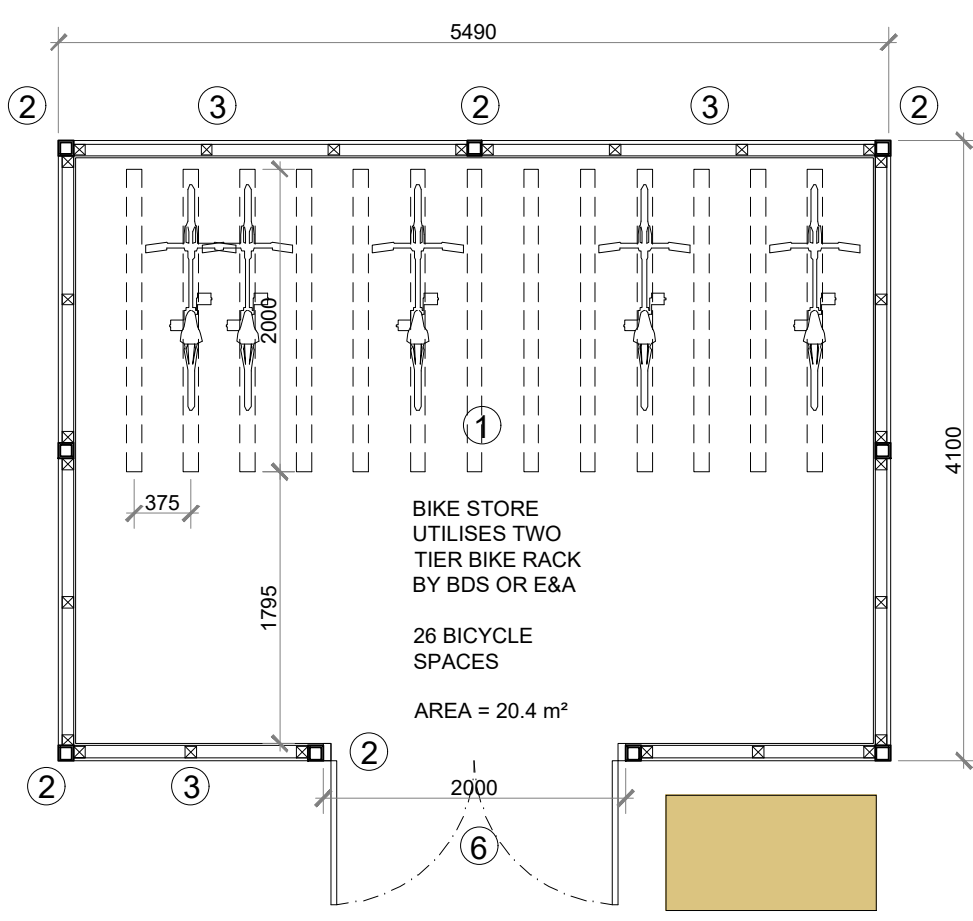


TYPICAL REAR ELEVATION @ 1:50



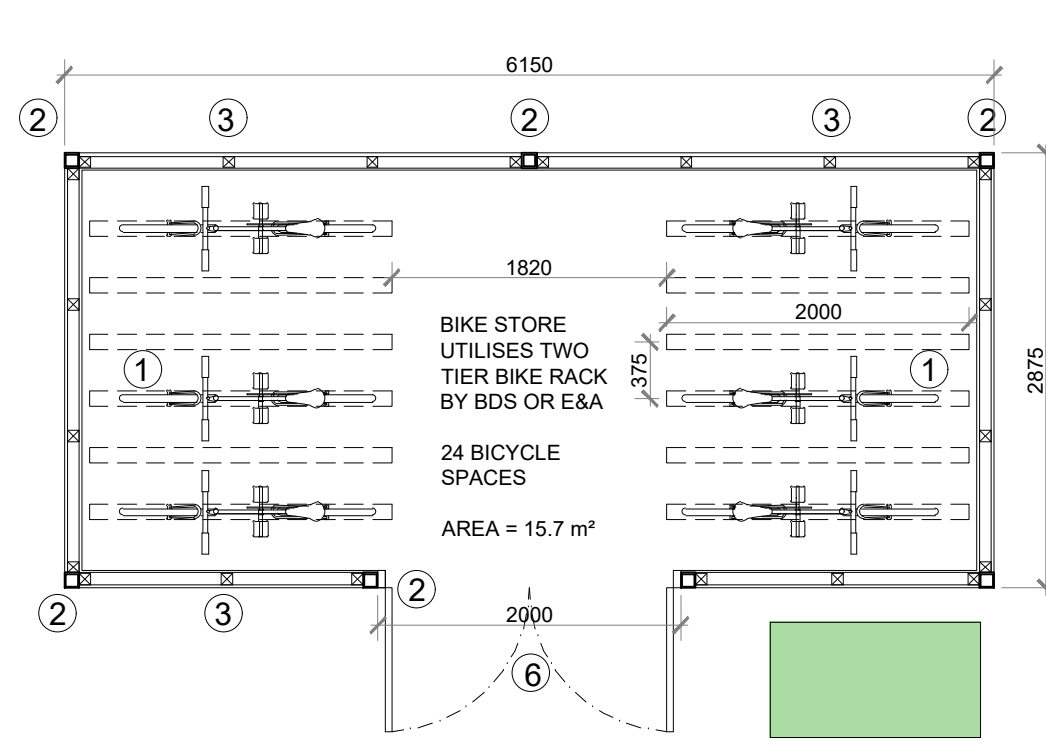
FLOOR PLAN @ 1:50

**TYPE H**



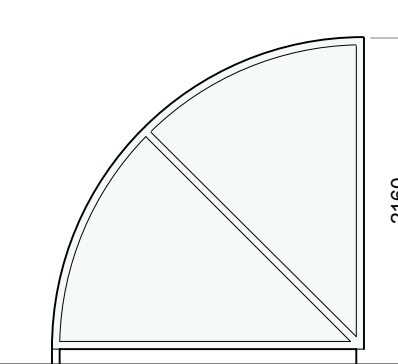
FLOOR PLAN @ 1:50

**TYPE J**

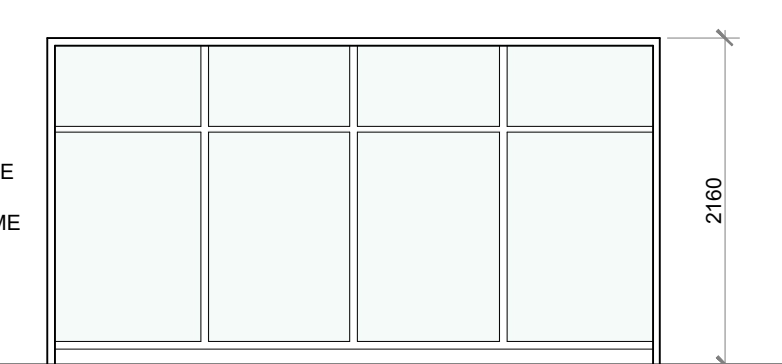


FLOOR PLAN @ 1:50

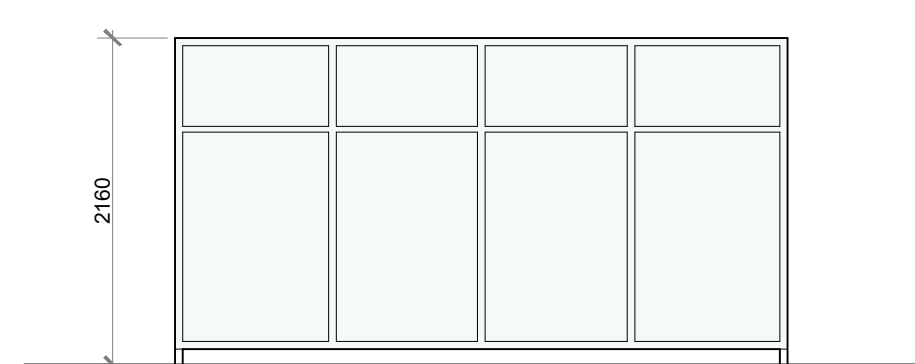
**TYPE K**



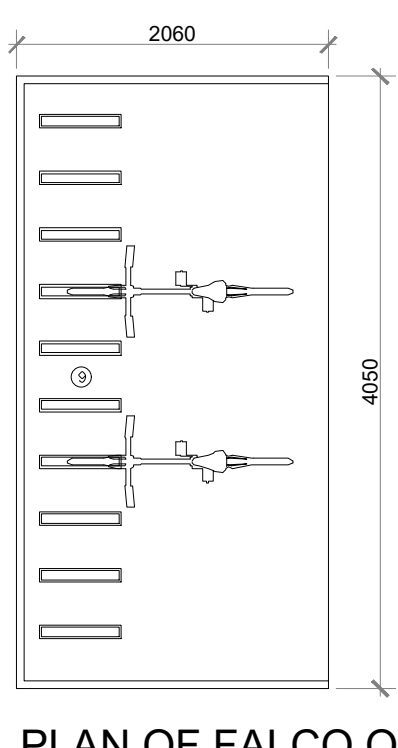
SIDE ELEVATION OF FALCO QUARTER CYCLE SHELTER (10 NO. BICYCLE STORAGE)  
@ 1:50



FRONT ELEVATION OF FALCO QUARTER CYCLE SHELTER (10 NO. BICYCLE STORAGE)  
@ 1:50



REAR ELEVATION OF FALCO QUARTER CYCLE SHELTER (10 NO. BICYCLE STORAGE)  
@ 1:50



PLAN OF FALCO QUARTER CYCLE SHELTER (10 NO. BICYCLE STORAGE)  
@ 1:50

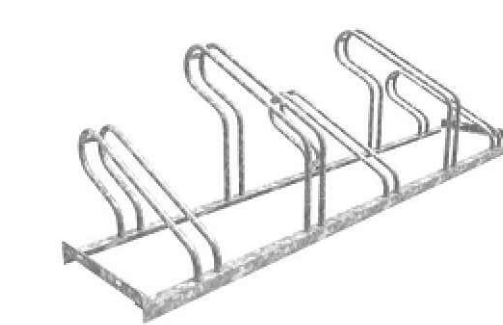
**TYPE L**



SAMPLE IMAGE OF PROPOSED FALCO QUARTER CYCLE SHELTER



SAMPLE IMAGE OF PROPOSED FALCO QUARTER CYCLE SHELTER



PROPOSED FALCO A-11 CYCLE RACK SAMPLE IMAGE  
⑨

**TYPE M**

FALCO A-11 BIKE RACK (IN SHELTERED / COVERED AREA IN NEIGHBOURHOOD CENTRE)

**TYPE N**

FALCO A-11 BIKE RACK (INTERNAL TO THE CRECHE IN THE NEIGHBOURHOOD CENTRE)

**BICYCLE PARKING PROVISION:**

TOTAL BIKE SPACES PROVIDED:	732
BIKE SPACES TO SERVE THE RESIDENTIAL DEVELOPMENT:	670
LONG STAY RESIDENTIAL SPACES:	134
RESIDENTIAL VISITOR SPACES:	134
BIKE SPACES TO SERVE THE COMMERCIAL DEVELOPMENT (INCLUDING CHILDCARE):	62
BIKE SPACES TO SERVE CHILDCARE ONLY:	22

BICYCLE PARKING IS PROVIDED THROUGHOUT TO EXCEED THE REQUIREMENTS IN TABLE 17.10 OF THE CDP AND THE REQUIREMENTS OF DESIGN STANDARDS FOR NEW APARTMENTS 2020 (LOCATIONS ARE SHOWN ON THE SITE LAYOUT PLANS AND ON THE NEIGHBOURHOOD CENTRE DRAWINGS).

**BICYCLE PARKING BREAKDOWN:**

APARTMENTS:	
TOTAL NO. OF APARTMENT BICYCLE SPACES REQUIRED:	= 515
TOTAL NO. OF APARTMENT BICYCLE VISITOR SPACES REQUIRED:	= 115
TOTAL NO. OF SPACES REQUIRED:	= 630
TOTAL NO. OF SPACES PROVIDED:	= 670
NEIGHBOURHOOD CENTRE (EXCL. 13 APARTMENTS):	
TOTAL NO. OF SPACES REQUIRED FOR CRECHE:	= 17
TOTAL NO. OF SPACES REQUIRED FOR COMMERCIAL:	= 35
TOTAL NO. OF SPACES REQUIRED:	= 52
TOTAL NO. OF SPACES PROVIDED:	= 62
TOTAL NO. OF BICYCLE SPACES REQUIRED:	= 682
TOTAL NO. OF BICYCLE SPACES PROVIDED:	= 732

TO SUMMARISE, 630 SPACES ARE REQUIRED FOR APARTMENTS WITH 52 REQUIRED FOR THE NEIGHBOURHOOD CENTRE COMMERCIAL AND CRECHE USES + 682 REQUIRED IN TOTAL. 732 SPACES ARE BEING PROVIDED THROUGHOUT THE DEVELOPMENT. A SUPPLY OF 68 SPACES. PLEASE REFER TO THE SITE STATISTICS INFORMATION IN THE APPENDIX OF THE ARCHITECTURAL DESIGN STATEMENT, AND THE MOBILITY MANAGEMENT PLAN AND TRAFFIC AND TRANSPORT ASSESSMENT DOCUMENTS PREPARED FOR THE DEVELOPMENT, FOR FURTHER DETAIL ON BICYCLE PARKING REQUIREMENTS.

**BICYCLE PARKING SHELTER TYPE BREAKDOWN:**

TYPE G: (38 SPACES PER SHELTER) X 2	= 76
TYPE H: (48 SPACES PER SHELTER) X 8	= 384
TYPE J: (26 SPACES PER SHELTER) X 1	= 26
TYPE K: (24 SPACES PER SHELTER) X 6	= 144
TYPE L: (NOS. VARY—30 SPACES ALLOCATED FOR NEIGHBOURHOOD CENTRE, 38 FOR APARTMENTS)	= 58
TYPE M: (SHELTERED/COVERED RACKS IN NEIGHBOURHOOD CENTRE)	= 20
TYPE N: (INTERNAL TO THE CRECHE)	= 22
TOTAL:	= 732

**NOTES:**

DO NOT SCALE. USE ONLY FIGURED DIMENSIONS WHICH SHOULD BE CHECKED ON SITE BEFORE WORK COMMENCES.  
ALL WORK TO BE CARRIED OUT IN ACCORDANCE WITH THE LATEST BUILDING REGULATIONS.  
REFER TO STRUCTURAL ENGINEER'S DRAWINGS AND SPECIFICATION FOR ALL STRUCTURAL WORK.  
THIS DRAWING IS COPYRIGHT.

NO.	REVISIONS	DATE	H	DATE
A			I	
B			J	
C			K	
D			L	
E			M	
F			N	
G			O	

**LEGEND:**

<b>OFA</b> O'NEILL & FAY LOWER O'NEILL STREET CO. KILDARE TEL: 0181 904 0000 EMAIL: info@ofa.ie WWW: www.ofa.ie	PROJECT: PROPOSED GREAT CONNELL SHD AT NEWBRIDGE, CO. KILDARE
<b>RIAI</b> REGISTERED 2021	TITLE: PROPOSED BICYCLE STORAGE DETAILS.
CLIENT: ASTON LTD.	STAGE: PLANNING
PROJECT NO.: 19070	DRG. NO.: PA-016
SCALE: 1:50 & 1:1000	DRAWN: JPF
DATE: MARCH 2022	CHECKED: POF